



**Adana-Rose Klass**  
Non-Principal Property  
Practitioner  
Registered with PPRA  
(FFC 202 339 264 9)  
+27826019818  
adana@vartrust.co.za



**Zelton Klass**  
+27826536725  
zelton@vartrust.co.za

Contact Head Office

087 1354450

Kutoroka  
Scorpion Trail  
Midrand

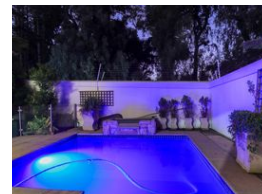
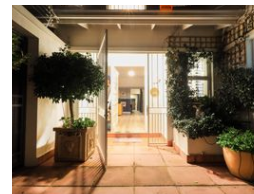
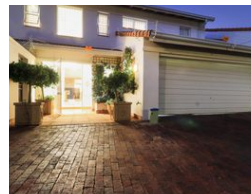
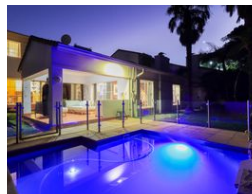
## 3 Bedroom Freestanding Rented in Victory Park

RENTED



SOLE MANDATE

Web Ref RL4644



R30,000 pm

**Lease Period** 12 months

**Availability** Negotiable

**Deposit** R35,000

**Annual Escalation** -

**Lease Excludes:**

Utilities

3 2 2

Exclusive Cluster.....This is THE ONE

Overlooking Delta Park in an exclusive complex is this secure, superbly maintained cluster home. Double volume ceilings welcome light into the heart of the home, Superior quality finishes and generous accommodation are the keynotes on offer.

Gracious entertainment areas that gently flow to covered north facing covered patio, and private secure treed garden, this home is an entertaining family's dream come true.

Accommodation includes an Inviting open plan kitchen with gas range, 3 beautiful bedrooms with more than ample built-in-storage and excellent mes and second bathroom too, bright guest bathroom.

Double garage offers additional storage and with direct access to the house.

Alternate energy integrated

Single secure staff suite.

### Features

**Pets Allowed** Yes

#### Interior

Bedrooms	3
Bathrooms	2
Kitchens	1
Recep. Rooms	3
Furnished	No

#### Exterior

Garages	2
Carports / Parkings	2
Security	Yes
Dom. Accom.	1
Pool	Yes
Views	True

#### Sizes

Floor Size	323m <sup>2</sup>
Land Size	616m <sup>2</sup>