



German Tsela
Non-Principal Property
Practitioner
Registered with PPRA
(FFC 202 271 333 13)
0793385829
german@vartrust.co.za

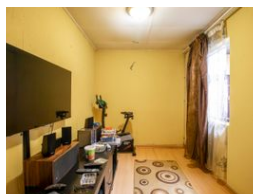
Contact Head Office

087 1354450

Kutoroka
Scorpion Trail
Midrand



Web Ref RL4956



R790,000

Monthly Bond Repayment R8,020.31

Calculated over 20 years at 10.75% with no deposit.

Transfer Costs R25,898.00 **Bond Costs** R19,565.00

These calculations are only a guide. Please ask your conveyancer for exact calculations.



A beautiful corner stand house is up for sale in Glenridge.

A beautiful corner stand house is up for sale in Glenridge.

This property was previously used as business premises where a flourishing butchery and chesa nyama was being run.

The infrastructure for the business is still intact and needs a little TLC to bring it back to it's former glory. The biggest structure outside is the then butchery, very spacious and fully tiled.

This investment property has a huge yard and space for any future improvements or expansion of the house.

The house itself was turned into a 1 bedroom with a walk-in closet, and also has a fitted kitchen, bathroom, open lounge and dining room.

There are several outside rooms with the biggest very spacious and boasts a shower inside. The outside rooms need to be finished off in terms of full completion, just a little polish work here and there.

The house can be...

Features

Pets Allowed Yes

Interior

Bedrooms	1
Bathrooms	1
Kitchens	1
Recep. Rooms	1
Furnished	No

Exterior

Garages	1
Carports / Parkings	1
Security	Yes
Dom. Accom.	4
Pool	No
Views	False