



Rene van Wyk

Non-Principal Property Practitioner

Registered with PPRA (FFC 202 232 450 1)

0725872821

renevanwyk@vartrust.co.za

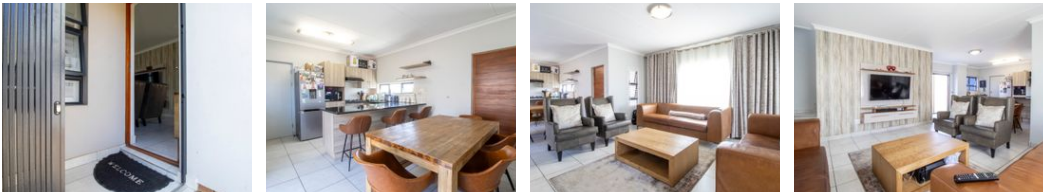
Contact Head Office

087 1354450




Kutoroka

Scorpion Trail

Midrand



R2,195,000

 3
  2.5
  2

Monthly Bond Repayment R22,284.28
 Calculated over 20 years at 10.75% with no deposit.

Transfer Costs R89,647.00 **Bond Costs** R34,625.00
 These calculations are only a guide. Please ask your conveyancer for exact calculations.

Monthly Levy R897.8 **Monthly Rates** R1,270.8

Enchanting family home on the doorstep of Curro Thatchfield Private School

Corner erf, bigger than the average erf in Thatchfield Ridge!!

APPROVED PLANS.

All blinds and curtains included in selling price!! As well as stunning TV unit and wall paper. Another added bonus are the tinted windows for more privacy.

Upon entering this beautiful family home you are welcomed by the spacious open plan lounge/dining room/kitchen area.

The kitchen has beautiful wooden built in cupboards with granite tops, A 4 burner gas hob with 2x gas bottles. The breakfast nook makes it easy for on the go people to quickly grab a bite to eat. The kitchen also has space for a fridge, electrical appliances and it has an electric oven and geyser with a heat pump.

In the dining area there is a glass sliding door which opens onto the back yard and sun swept patio area.

Downstairs you will find the guest bathroom with toilet...

Features

Pets Allowed		Yes			
Interior		Exterior		Sizes	
Bedrooms	3	Garages	2	Land Size	337m²
Bathrooms	2.5	Carports / Parkings	2		
Kitchens	1	Security	Yes		
Recep. Rooms	2	Pool	No		
Studies	1	Views	False		
Furnished	No				

