



Renee Varejes
Principal Property Practitioner
Registered with PPRA (FFC 202 221 238 5)
0827777082
renee@vartrust.co.za



Nicole Poltera
Non-Principal Property Practitioner
Registered with PPRA (FFC 202 272 385 2)
0837771071
nicole@vartrust.co.za

Contact Head Office

087 1354450

Kutoroka
Scorpion Trail
Midrand

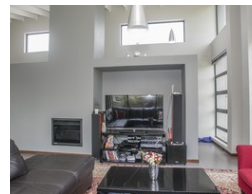
3 Bedroom Cluster Sold in Jackal Creek Golf Estate

SOLD



SOLE MANDATE

Web Ref RL537



R2,600,000

Monthly Bond Repayment R26,395.95

Calculated over 20 years at 10.75% with no deposit.

Transfer Costs R123,720.00 **Bond Costs** R38,415.00

These calculations are only a guide. Please ask your conveyancer for exact calculations.

Monthly Levy R750 **Monthly Rates** R2,700

3 2 2

DESIGNER HOMER A YOUNG PROFESSIONAL COUPLE

A modern Golf Estate Living in sophistication with opulent finishes.

This cluster offers three bedrooms, two bathrooms main en-suite nestled in an indigenous garden.

Entrance hall with light tiling throughout the home. A double volume dining, lounge and open plan kitchen. A dark wooden kitchen with granite tops, Bosch electric oven and gas hob.

A wood burning fire place in the living area, aluminium sliding doors that open onto a covered patio overlooking a tranquil low maintenance garden

Air con in living room and all bedrooms. There is a small study area.

This home is airy and situated in an 18 hole golf course with a Montessori School, tennis courts, swimming pool, club house, restaurant and supermarket, which completes this very sought after lifestyle.

Please contact us to view the property.

Features

Pets Allowed Yes

Interior

| | |
|--------------|----|
| Bedrooms | 3 |
| Bathrooms | 2 |
| Kitchens | 1 |
| Recep. Rooms | 2 |
| Furnished | No |

Exterior

| | |
|----------|-----|
| Garages | 2 |
| Security | Yes |
| Pool | Yes |

Sizes

| | |
|------------|-------------------|
| Floor Size | 191m ² |
| Land Size | 409m ² |

